

Landscaping Lakefront Property

May 23, 2006

6:00– 9:00 pm

White Lake Township Offices

7525 Highland Road

White Lake, MI 48383

Accommodations for persons with disabilities may be requested by calling Linda Smith at (248) 858-0887 by May 16, 2006 to make arrangements. Requests received after this date will be made when possible.



Individuals can play a significant role in maintaining their shoreline and the quality of their lake.

Workshop Schedule:
Check-In: 6:00– 6:30 pm
Program: 6:30– 9:00 pm

This workshop will allow you to gain an understanding on the following topics:

- How a lake works and how what you do on or around your property can affect water quality of the entire watershed
- Principles of landscaping for lake property owners
- Recommended strategies for lawn care around lakes
- How native plant buffers function to protect water quality and provide habitat for wildlife
- How to plan and design a native plant buffer
- Bioengineering techniques to stabilize the shoreline
- “Seven simple steps” to protect water quality
- Volunteer lake monitoring

This program is a cooperative effort between:

Commissioner Eileen Kowall,
District #6: White Lake Township, Waterford
Michigan State University Extension
USDA Natural Resources Conservation Service
Oakland County Planning
& Economic Development Services
Clinton River Watershed Council
Oakland County Drain Commissioner's Office
Michigan Groundwater Stewardship Program
Charter Township of White Lake

For more information on MSUE, visit:

www.msue.msu.edu/oakland

Michigan State University Extension programs and materials are open to all without regard to race, color, national origin, gender, religion, age, disability, political beliefs, sexual orientation, marital status, or family status.

Landscaping Lakefront Property



A workshop to help teach the principles of lakescaping for wildlife and water quality

May 23, 2006

White Lake Township Offices

6:00– 9:00 pm

White Lake, Michigan



**MICHIGAN STATE
UNIVERSITY
EXTENSION**

Landscaping Waterfront Property

Workshop Description:

With the wealth of lakes in Michigan, in particular in Oakland County, state regulatory agencies simply do not have the resources to manage each individual lake and its watershed. This leaves the responsibility in the hands of individuals. The goal of this program is to present practical ways you can help become a steward of your own lake and maintain the unique resources of Oakland County and the state as a whole.

Registration. 6:00– 6:30 PM.

Program Introduction. 6:30 PM.

“Sustaining Our Natural Advantage.”

In order to care for our water resources into the future, it is necessary to have a historical perspective on Oakland County’s water and natural resources, their value, and stewardship. Presented by **Larry Falardeau**, Principal Planner, Environmental Stewardship Program, Oakland County Planning and Economic Development Services.



Practical Lawn Care.

Many lake property owners maintain lawns that cover some portion of their properties. Following a set of practical lawn care tips will help you to protect not only the health of your lake but of the watershed as a whole. Presented by **Bindu Bhakta**, MSUE Water Quality Educator, Michigan Groundwater Stewardship Program.

Lakescaping.

Shoreline management is one of the most important activities lake property owners can be involved in to protect water quality. This introduction will explain the importance of lakescaping. Presented by **Howard Wandell**, Lake and Stream Management Specialist, Department of Fisheries and Wildlife, Michigan State University.



Getting Started with a Lakescaping Project.

Creating native plant buffers help preserve water quality and also support a variety of wildlife in your landscape. Learn how to plan and design a native plant buffer by looking at sample landscape plans. Native plant lists along with where these plants can be purchased locally will also be provided. Presented by **Howard Wandell** and **Tracie Beasley**, Stewardship Director, Clinton River Watershed Council.

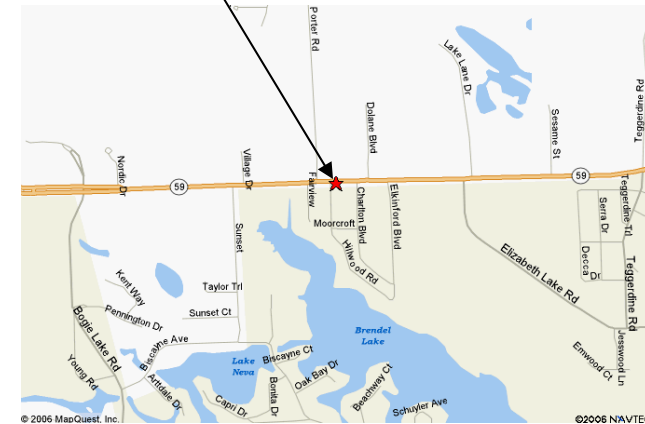
Bioengineering Techniques for Shoreline Stabilization.

The impact of waves and ice along the lakeshore can cause substantial erosion. Techniques that use organic and inorganic materials combined with plants provides erosion control through the use of live vegetation. Presented by **Jay Blair**, District Conservationist, United States Department of Agriculture, Natural Resource Conservation Service.

Program Conclusion, Evaluation & Questions. 9:00 PM.

Workshop Location: White Lake Township Offices

7525 Highland Road, White Lake, MI 48383



Workshop Cost:

The cost for this workshop is **\$10/person**. Spaces are limited, and **Registration is Required**. To register, send completed **Registration Form with payment (checks payable to MSU Extension) and mail to: MSUE—Oakland County, 1200 N. Telegraph Road, Dept. 416, Pontiac, MI 48341**. Register via phone by calling **(248) 858-0887**.

REGISTRATION FORM:

Name(s) _____

Street _____

City _____

State _____ Zip _____

Phone _____

Email _____