

Introduction to Design April 2, 2008

Building a well-planned landscape is much more than picking out a few plants. Even the most seasoned garden designer can find the initial design phase a daunting task.



During this session participants will be exposed to a simple road map to the design process. Using real-life examples, defining what makes the floors, walls and ceilings in your landscape will define outdoor rooms. Later in the lecture basic art and design principles such as line, form and color will help demystify what makes a design really “work.”

Components of a Well Planned Landscape April 16, 2008

The design process will be further explored to include why you choose certain plants and the role they play in an overall setting. Hands-on exercises will help students learn to use the right plants in the right place as well as to incorporate stunning plant combinations to



give the design style and creativity. Using creative hardscape and decorative features will help participants put their personal stamp of originality into their design. This engaging

lecture will be followed with some real-life homework for the next session.

The Landscape Design Process April 23, 2008

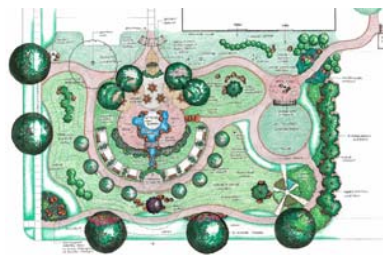
As an “outdoor room,” the landscape should be both aesthetically pleasing and useful. Whether designing a landscape for yourself or one for a client, a realistic personal inventory and goals need to be developed for the design.

The personal inventory should be coupled with a complete site analysis that explores, light, soils, drainage and many other components. During this session, taking the basics and putting them on paper will allow the concept for the design come to fruition.



Getting Started! April 30, 2008

The final phase includes real-life drawing and coaching by a team of professionals. Participants will work as a group and also as an individual to complete their masterpiece that pulls it all together.



2008 Landscape Design Series

Registration Form

Business Name: _____

Participant Name(s): _____

Address: _____

City/Zip Code: _____

Phone: _____

Email: _____

Cost: \$225.00 per participant (includes four instructional sessions and all architectural drawing tools and paper).

Check enclosed for \$ _____
(Sorry, credit card service is not available)

Make check payable and mail to:
MSU Extension Oakland County
ATTN: Landscape Design
1200 N Telegraph Rd. Bldg 26E
Pontiac, MI 48341

Space is limited!

Registration Deadline: March 26, 2008

Confirmation and maps will be sent to registered participants.

About the Landscape Design Team...



Rebecca Finneran received a B.S. in Horticulture with emphasis in Landscape Design from Michigan State University. She has been the Kent County MSU Extension Horticulture educator since 1987 where she helps the

green industry and consumers learn about horticulture, the environment and pesticide safety. Finneran is the administrator of the popular Kent County MSU Extension Master Gardener program, is seen frequently on television and writes a weekly column for the Grand Rapids Press.

Dr. Robert Schutzki has been a faculty member in the MSU Horticulture Department for 25 years having responsibility for teaching and Extension. With statewide notoriety for being an inspirational teacher, Schutzki has also been an energetic leader in developing the student-designed Clancy Lewis Arboretum. Schutzki's engaging teaching style and creative personality has made him a favorite among Michigan gardeners.



Mary Wilson has a B.S. and M.S. in Landscape Horticulture and has been a MSU Extension Horticulture Educator for 23 years. She is a frequent lecturer for the

Michigan Master Gardener Volunteer Program and educates green industry businesses and homeowners on plant selection and management, pesticide safety and environmental horticulture. Wilson has a passion for plants and loves to find new and underutilized plants for the Michigan landscape.

Cost: \$225.00

(includes four instructional sessions and all architectural drawing tools and paper)

Questions? Contact Linda Smith @
248.858.0887

Helping *You*
Put Knowledge
to Work!

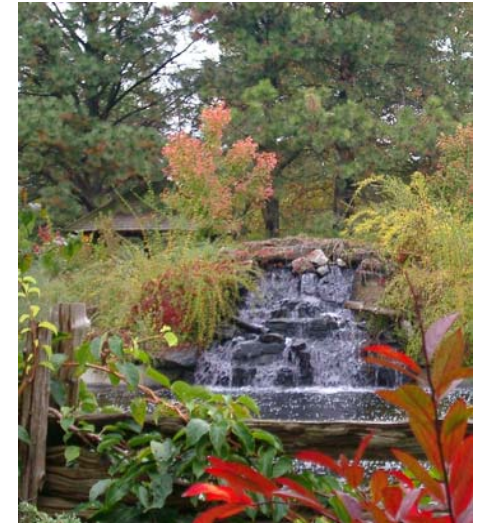
Master Gardener volunteer participants will receive 12 hours of continuing education upon completion of the series.

Cancellation Policy: No refunds within 48 hours of event, except for weather cancellation by sponsors (90% refund). Substitutions allowed.

Special Needs: Please contact the MSU Extension office (248-858-0887) at least 2 weeks prior to the event if you have special needs.

MSU is an affirmative-action, equal opportunity employer. Michigan State University Extension programs and materials are open to all without regard to race, color, national origin, gender, gender identity, religion, age, height, weight, disability, political beliefs, sexual orientation, marital status, family status or veteran status.

2008 *Landscape Design Series*



*Explore landscape and garden design
through hands-on learning!*

Wednesdays
April 2, 16, 23, 30, 2008
6:30 – 9:30 pm

Sponsored by:
**Michigan State University Extension
Oakland County**

**Oakland County Executive Office Building
2100 Pontiac Lake Road
Waterford, MI**

